



# GAT MONTHLY MEMBERSHIP PROGRESS REPORT

Results as of: 10/31/2021

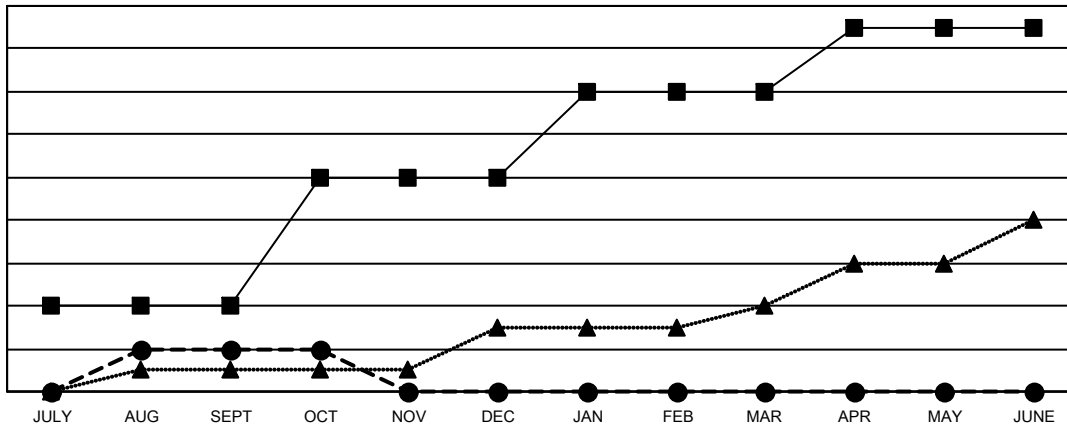
Multiple District 35

LOCATION: FLORIDA

| Clubs                 |               |           |               |
|-----------------------|---------------|-----------|---------------|
| RESULTS FOR 2021-2022 |               |           |               |
| QUARTER               | NEW CLUB GOAL | NEW CLUBS | DROPPED CLUBS |
| JULY/AUG/SEPT         | 4             | 2         | 3             |
| OCT/NOV/DEC           | 6             | 0         | 0             |
| JAN/FEB/MAR           | 4             | 0         | 0             |
| APR/MAY/JUNE          | 3             | 0         | 0             |

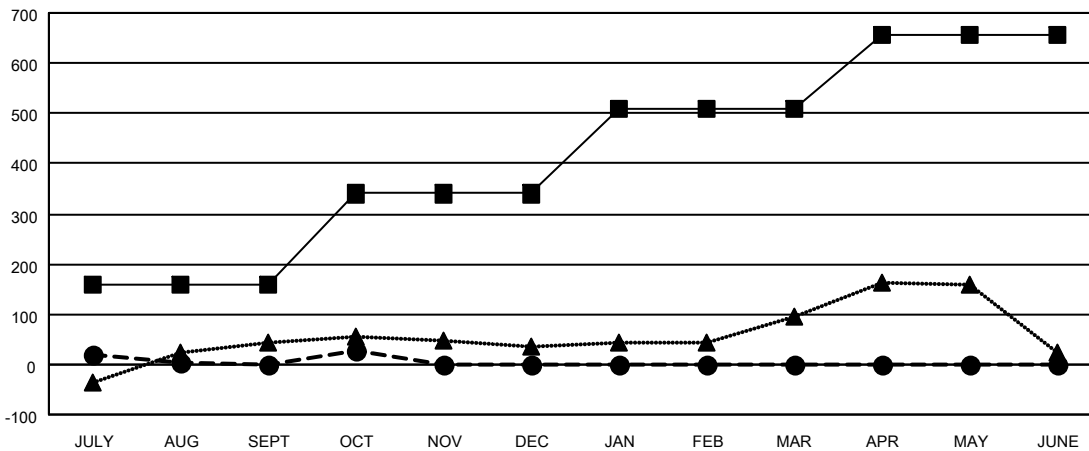
| Members               |                        |                      |  |
|-----------------------|------------------------|----------------------|--|
| RESULTS FOR 2021-2022 |                        |                      |  |
| QUARTER               | MEMBER GROWTH NET GOAL | MEMBER GROWTH ACTUAL | DROPPED MEMBERS ACTUAL (including transfers) |
| JULY/AUG/SEPT         | 160                    | 272                  | 229  |
| OCT/NOV/DEC           | 180                    | 84                   | 44   |
| JAN/FEB/MAR           | 170                    | 0                    | 0  |
| APR/MAY/JUNE          | 145                    | 0                    | 0  |

GOALS AND ACTUAL NEW CLUBS CUMULATIVE



- CURRENT YEAR GOALS FOR NEW CLUBS
- CURRENT YEAR ACTUAL NEW CLUBS
- ▲- LAST YEAR ACTUAL NEW CLUBS

GOALS AND ACTUAL MEMBERS CUMULATIVE



- MEMBER GROWTH NET GOAL
- MEMBER GROWTH ACTUAL
- ▲- LAST YEAR MEMBERSHIP ACTUAL

|                         |            |
|-------------------------|------------|
| <b>DROPPED CLUBS: 3</b> |            |
| <b>DROPPED MEMBERS</b>  |            |
| DECEASED                | 31         |
| CLUB CANCELLED          | 35         |
| OTHER                   | 207        |
| <b>TOTAL</b>            | <b>273</b> |

85 CLUBS OF 219 ADDED 1 OR MORE NEW MEMBERS

[CLICK HERE FOR CUMULATIVE MEMBERSHIP DATA](#)

| GENDER DISTRIBUTION                    |                |
|--|----------------|
| MALE                                   | 2,673 (53.66%) |
| FEMALE                                 | 2,308 (46.34%) |
| NON BINARY                             | 0 (0.00%)      |
| PREFER NOT TO ANSWER                   | 0 (0.00%)      |
| <b>TOTAL FAMILY UNIT MEMBERS</b>       | <b>1,160</b>   |
| <b>FAMILY MEMBERS PAYING HALF DUES</b> | <b>595</b>     |